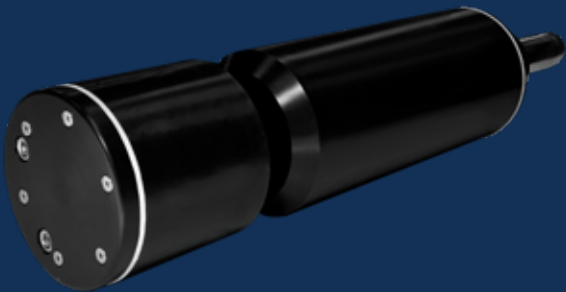


# DUAL-WAVE PROBE

**MA** SERIES



## FEATURES & BENEFITS

- Affordable real-time organics monitoring solution
- Dual wavelength probe (254 nm and 550 nm)
- Long-life LED light sources
- Operator friendly, low maintenance design
- Quick and simple optical measurements
- Reagent free operation
- Multiple parameter configuration available
- Parameters include TOC, DOC, UV254, UVT, TSS, colour

MUNICIPAL DRINKING WATER  
MUNICIPAL WASTEWATER  
INDUSTRIAL PROCESS WATER  
INDUSTRIAL WASTEWATER

WATER QUALITY  
MONITORING  
SOLUTIONS

## REAL-TIME MONITORING SOLUTION

### MA Series Dual-Wave Probe

Real Tech's robust MA series submersible probe provides affordable real-time measurement of organic matter in water or wastewater. Designed to meet the needs of many monitoring applications, the series offers multiple sensor path length selections for the desired measurement range.

### Controllers and Accessories

Our innovative modular product platform allows a system to be configured around the ideal sensor with controller options and various accessory products, including compressed air cleaning systems that lower maintenance while improving system performance, and mounting kits for simple installation and operation. We can truly meet the physical demands of any installation to ensure reliable, continuous operation.

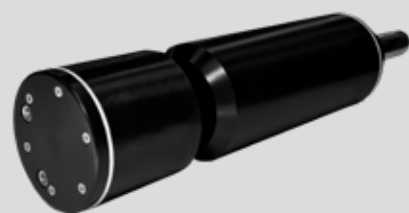
### Real-time Actionable Data

With the right sensor and hardware configuration, we then build a custom calibration to monitor the aggregate organics parameter(s) or compounds of interest in real-time, accurately and reliably.

## MEASUREMENT PRINCIPLE

The MA sensor utilizes light at 254 and 550 nm wavelengths. Many organic compounds, specifically aromatic organics, absorb light at 254 nm while interfering compounds are compensated for at 550 nm. Benefiting from Real Tech's innovative LED technology, accurate and stable measurements are obtained overtime with minimal maintenance or operator intervention. MA series probe parameters include TOC, DOC, UV254, UVT, TSS and colour.

**REALTECH**  
INC.



# DUAL-WAVE PROBE

## MA SERIES

# SPECIFICATIONS

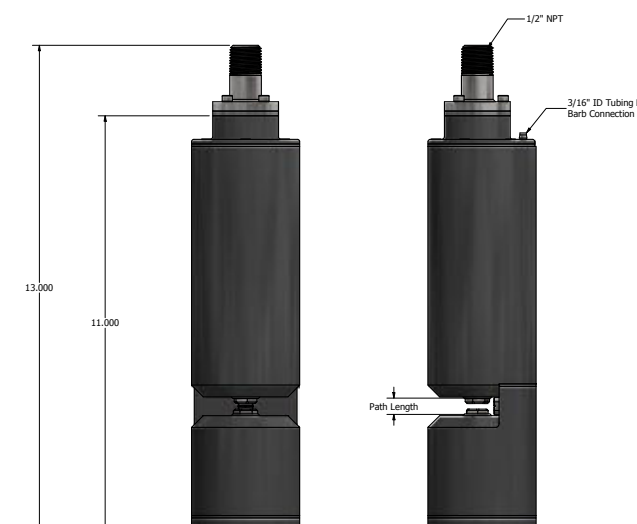
CHARACTERISTIC	TECHNICAL DATA				
	MODEL	MA2010	MA2020	MA2040	MA2100
Path Length	1 mm	2 mm	4 mm	10 mm	
Parameters	TOC, DOC, UV254, UVT, TSS colour				
Range	Depends on model selected. Refer to range chart on next page.				
Units	Parameter specific (mg/L, cm <sup>-1</sup> , % or PCU)				
Sampling Time	10 seconds				
Calibration	Zero to DI water. Factory parameter calibration allows field adjustment as required.				
Cleaning	Real Air Clean automatic pressurized air cleaning system				
Self-Diagnostics	Detection and diagnosis of internal system fault				
Alarms	Continuous detection of leaks, lamp output, humidity, temperature and electrical fault				
Humidity Control	Humidity sensor with desiccant pack				
Wavelength	254 nm and 550 nm				
Light Source	LED				
Electrical/Comm.	From controller				
Storage Temp.	-20 to 60°C (-4 to 140°F)				
Operating Temp.	0 to 45°C (32 to 113°F)				
Weight	5 lb				
Dimensions	11" H x 2.875" Diameter				
Warranty	2-year limited warranty (Extended care packages available)				

\* Technical Specifications are subject to change without notice.

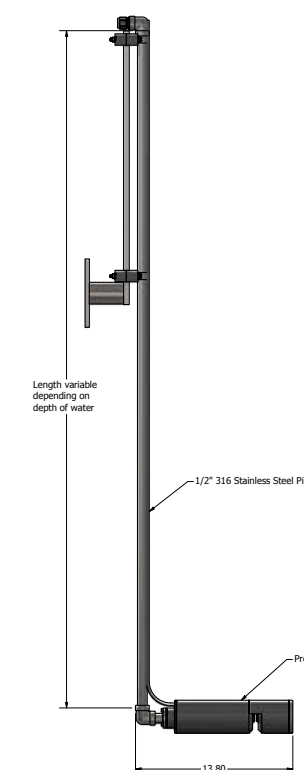
## DIMENSIONS

MA series sensors are submersible probe instruments installed directly in-situ using a mounting kit attached to a tank wall or railing.

## DIMENSIONS FOR MA PROBE



## MOUNTING FOR MA PROBE



## MODELS & RANGE

The MA series models include dual-wave probe sensor, 35 feet of communication cable and 35 feet of air tubing. Controller, mounting kit and cleaning system sold separately.

MODEL#	PATH LENGTH	UV254 (cm <sup>-1</sup> )	UVT (%)	TOC (mg/L)	DOC (mg/L)	COLOUR (PCU)
MA2010	1 mm	0 - 20	0 - 100	0 - 1200	0 - 800	0 - 6000
MA2020	2 mm	0 - 10	0 - 100	0 - 600	0 - 400	0 - 3000
MA2040	4 mm	0 - 5	0 - 100	0 - 300	0 - 200	0 - 1500
MA2100	10 mm	0 - 2	1 - 100	0 - 120	0 - 80	0 - 600

\* Stated ranges are approximate, dependent on industry, site and application - contact Real Tech to confirm model selection

\* Range for TSS and permanganate is site specific, contact Real Tech for details

\* Approximation of colour measurement based on UV254

## CONTROLLERS

PRODUCT #	NAME	DESCRIPTION
S-169000	Real Controller	Wall mounted controller with 4-line x 20-character back lit LCD display for sensors
S-11TPC	Real Controller Pro	Wall mounted controller with touch panel PC interface inside cabinet
S-11TPCD	Real Controller Pro	Wall mounted controller with touch panel PC interface on door

## ACCESSORIES

PRODUCT #	NAME	DESCRIPTION
S-188101	Air Clean System I	Air cleaning valve module requires on-site air (no compressor)
S-188102	Air Clean System II	Low power automatic CO <sub>2</sub> air cleaning system
S-188103	Air Clean System III	Automatic compressed air cleaning system including compressor
S-189031	LED Probe Mounting Kit I	Provides secure mounting attachment to a tank wall or open channel wall for sensor. No pole included
S-189032	LED Probe Mounting Kit II	Provides secure mounting attachment to a tank wall or open channel wall for sensor. 5ft pole included
S-189033	LED Probe Mounting Kit III	Provides secure mounting attachment to a tank wall or open channel wall for sensor. 10ft pole included

### Real Tech Inc.

1150 Champlain Court,  
Whitby, Ontario L1N 6K9 Canada  
TF: 1.877.779.2888 T: 1.905.665.6888  
info@realtechwater.com

**REALTECH**  
INC.