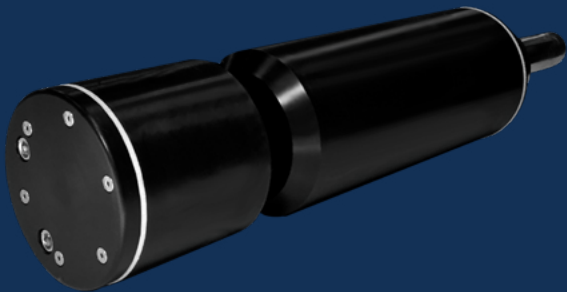


TSS PROBE



FEATURES & BENEFITS

- Affordable real-time TSS monitoring
- Robust submersible probe for in-situ measurement
- Long-life LED light source
- Operator friendly, low maintenance design
- Easy to install and operate

MUNICIPAL WASTEWATER
INDUSTRIAL WASTEWATER

WATER QUALITY
MONITORING
SOLUTIONS

REAL-TIME MONITORING SOLUTION

TSS Probe

Real Tech's robust TA series submersible total suspended solids (TSS) probe provides affordable real-time measurement of changes in particle concentration in wastewater. Designed to meet the needs of many monitoring applications, the series offers multiple sensor path length selections for the desired measurement range.

Controllers and Accessories

Our innovative modular product platform allows a system to be configured around the ideal sensor with controller options and various accessory products, including compressed air cleaning systems that lower maintenance while improving system performance, and mounting kits for simple installation and operation. We can truly meet the physical demands of any installation to ensure reliable, continuous operation.

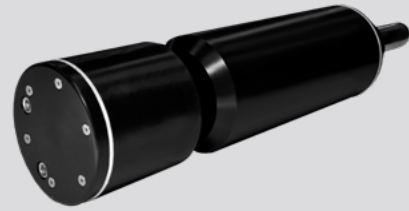
Liquid Ai Compatible

With the right sensor and hardware configuration, we then offer Liquid Ai data services to complement our monitoring systems. Calibration Health Monitoring ensures accuracy and reliability so our clients can have the utmost confidence in their results, while our Remote Monitoring platform enables access to data anywhere, anytime.

MEASUREMENT PRINCIPLE

The TSS sensor utilizes near infrared light for measurement to minimize or eliminate interference from other absorbing compounds. Benefiting from Real Tech's innovative LED technology, accurate and stable measurements are obtained overtime with minimal maintenance or operator intervention.

REALTECH
INC.



TSS SPECIFICATIONS

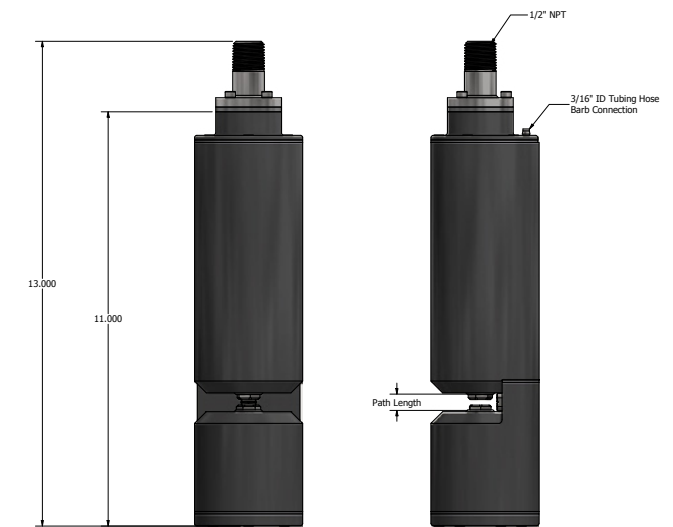
CHARACTERISTIC	TECHNICAL DATA			
	MODEL	TA2010	TA2020	TA2040
Path Length	1 mm	2 mm	4 mm	10 mm
Parameters	Total suspended solids (TSS)			
Units	mg/L			
Sampling Time	10 seconds			
Calibration	Zero to DI water. Factory parameter calibration allows field adjustment as required.			
Cleaning	Real Air Clean automatic pressurized air cleaning system			
Self-Diagnostics	Detection and diagnosis of internal system fault			
Alarms	Continuous detection of leaks, lamp output, humidity, temperature and electrical fault			
Humidity Control	Humidity sensor with desiccant pack			
Wavelength	Near infrared (NIR)			
Light Source	LED			
Electrical/Comm.	From controller			
Storage Temp.	-20 to 60°C (-4 to 140°F)			
Operating Temp.	0 to 45°C (32 to 113°F)			
Weight	5 lb			
Dimensions	11" H x 2.875" Diameter			
Warranty	2-year limited warranty (Extended care packages available)			

* Technical Specifications are subject to change without notice.

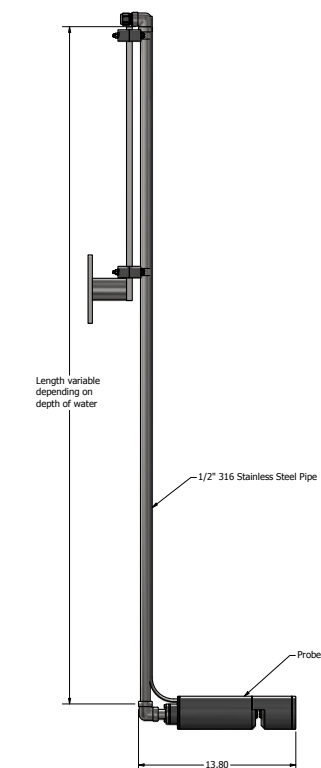
DIMENSIONS

TSS sensors are submersible probe instruments installed directly in-situ using a mounting kit attached to a tank wall or railing.

DIMENSIONS FOR TA PROBE



MOUNTING FOR TA PROBE



MODELS & RANGE

The TA series models include TSS probe sensor, 35 feet of communication cable and 35 feet of air tubing. Controller, mounting kit and cleaning system sold separately.

MODEL#	PATH LENGTH	TSS (mg/L)
TA2010	1 mm	0 - 20,000
TA2020	2 mm	0 - 10,000
TA2040	4 mm	0 - 5,000
TA2100	10 mm	0 - 2,000

* Stated ranges are approximate, dependent on industry, site and application - contact Real Tech to confirm model selection

CONTROLLERS

PRODUCT #	NAME	DESCRIPTION
S-169000	Real Controller	Wall mounted controller with 4-line x 20-character back lit LCD display for sensors
S-11TPC	Real Controller Pro	Wall mounted controller with touch panel PC interface
S-11TPCD	Real Controller Pro	Wall mounted controller with touch panel PC interface

ACCESSORIES

PRODUCT #	NAME	DESCRIPTION
S-188101	Air Clean System I	Air cleaning valve module requires on-site air (no compressor)
S-188102	Air Clean System II	Low power automatic CO ₂ air cleaning system
S-188103	Air Clean System III	Automatic compressed air cleaning system including compressor
S-189031	LED Probe Mounting Kit I	Provides secure mounting attachment to a tank wall or open channel wall for sensor. No pole included
S-189032	LED Probe Mounting Kit II	Provides secure mounting attachment to a tank wall or open channel wall for sensor. 5ft pole included
S-189033	LED Probe Mounting Kit III	Provides secure mounting attachment to a tank wall or open channel wall for sensor. 10ft pole included

Real Tech Inc.

1150 Champlain Court,
Whitby, Ontario L1N 6K9 Canada
TF: 1.877.779.2888 T: 1.905.665.6888
info@realtechwater.com

REALTECH
INC.